

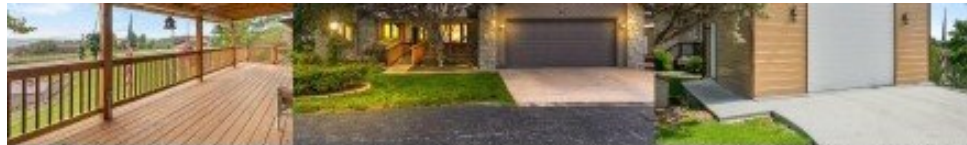
# 58 Homestead

Kimberling City, MO 65686



Powered by lakefrontexpo.com

MLS# 60248894



MULTIPLE SHOP BUILDINGS - LOW MAINTENANCE - BOAT SLIP (ADD \$)

# WaterVIEW



**\$614,900**

**4 Bedrooms | 4 Bathrooms | 3,500 Sqft**

Sunrise lakeview...3 shop buildings, 2 options for boat slips, lease or purchase. 1 acre of take a deep breath & say 'ahhh' privacy...& the location...there's a reason "location" is one of the most important rules of real estate. Tucked away on a private, gently sloping 1 acre, corner lot, this joyfully & skillfully constructed custom home is perched perfectly for optimum privacy & convenience. Full of excitement & adventure, inspiring you every single turn, to live life to its fullest, this is what you have been looking for to suit your lake lifestyle. Custom built & professionally landscaped this incredible estate will be welcoming you home each & every glorious day. Love the outdoors, your 1,000's of lake toys & hobbies? You will adore the massive amounts of freshly painted covered deck space & lower level walkout patio, the sprinkler system & private well to service it for free, low maintenance steel siding, insulated 22x20 shop building w/electric (10' door), 12x16 mini shop, insulated 18x32 shop building w/electric (10' door) & carport for even more lake toy storage! Want to bring the outdoors in? Large windows invite you through a sprawling, beautifully updated, open floor plan w/vaulted ceilings, 2 gas fireplaces, a chef's kitchen w/see-through fireplace, stainless appliances, island & dining w/view for grand entertaining. This property can easily & comfortably



**Ann Ferguson**

Phone: (417) 830-0175

Keller Williams Tri-Lakes

For full listing details, please scan:

