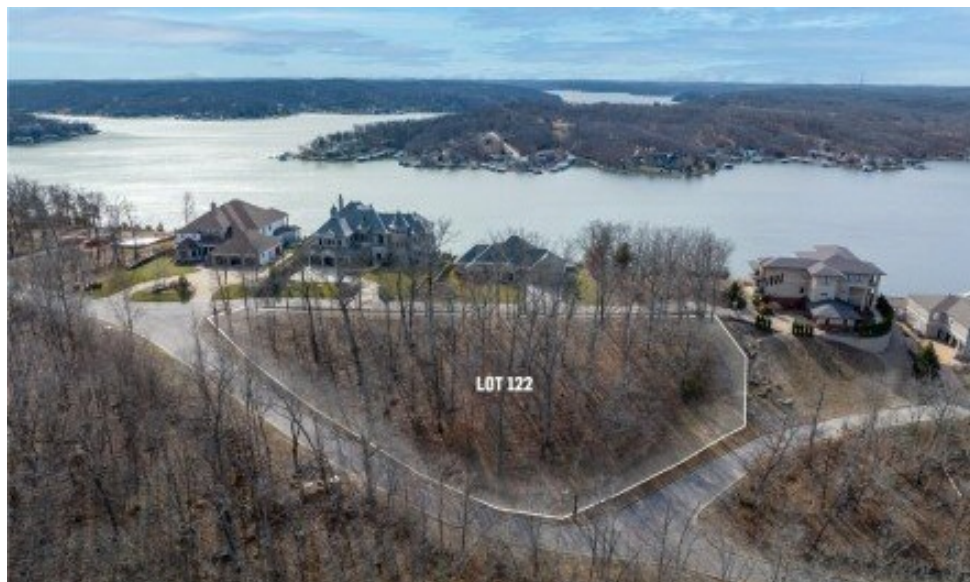


**122 Groban Way**  
Osage Beach, MO 65065



Powered by lakefrontexpo.com

**MLS# 3559653**



**\$190,000**

From the legacy of Burton Duenke and Duenke Family Properties. Panoramic Views from Palisades Highlands, a small, gated community offering large level lots that oversee miles of pristine views, offering privacy and security. There are just 4 lots remaining of the 22 total lots in this upscale gated community located at the 27-mile marker boasting a breathtaking 180-degree channel view from high atop the bluffs. Minutes from fine dining, entertainment, golf, shopping, hospital & airport, this setting offers all the conveniences of an in-town location while maintaining the privacy & seclusion of fine estate living. A cart path leads to the cove side marina available for Yacht mooring and offers slips up to 50'. The assessment amount noted is the same for undeveloped and developed lots. Contact the listing broker for plats and subdivision details.



**C. MICHAEL ELLIOTT**

C. Michael Elliott & Associates

For full listing details, please scan:

