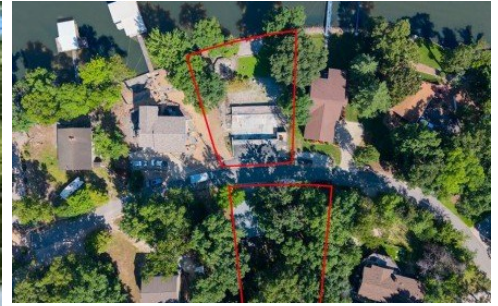


**2344 Channelview Drive**  
Osage Beach, MO 65065



Powered by lakefrontexpo.com

MLS# 3588186



**\$499,000**

Rare as Hens teeth, this almost 100 ft of moderate shoreline includes a private exposed aggregate concrete boat ramp! Launch your pleasure boat, tritoon, fishing boat or PWC's right in your very own backyard! This lot offers a spectacular view of the main channel yet is protected by a nearby point. Hardscaped with mature trees and located on a private paved road with little vehicular traffic. Packaged with this lot is a second tier lot directly behind lakefront lot that includes a 2 car garage! Located on the 24MM in Osage Beach a short distance to many restaurants including Margaritaville Resort, Paradise Bar & Grill, Redhead Yacht Club, shopping, golfing, airport, and close proximity to the Hospital make this a perfect spot for your new home. The Midwest Coast is calling for you! Note: the previous home was lost due to a fire in spring of 2026 foundation is still in place but has no value.



**DENNIS NEWBERRY**

Ozark Realty

For full listing details, please scan:

