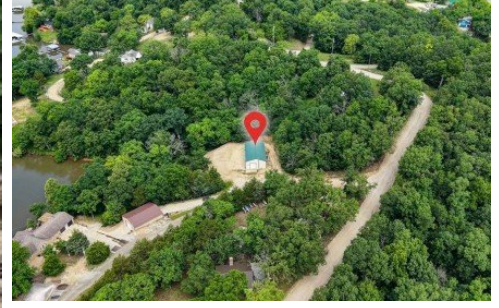


**Point Plaza**  
Edwards, MO 65326



Powered by lakefrontexpo.com

MLS# 3587765



**\$220,000**

Rare opportunity to own approximately 1 acre with 150 feet of Lake of the Ozarks shoreline at the 66 Mile Marker! This unique waterfront property features a versatile 30' x 52' metal building with concrete floors, heating and air conditioning, sewer plumbing in place, and a garage door for easy access. Currently serving as a game room, the building offers endless possibilities convert it into a workshop, storage facility, shouse, barndominium, or your custom lakefront retreat. With ample space to expand and exceptional lake frontage, this property is the perfect canvas for your vision. Enjoy beautiful lake views, easy water access, and the peaceful setting of one of Lake of the Ozarks' most desirable areas. Bring your ideas and start creating your dream lake property today!



**Joanna Boulware**

Better Homes and Gardens Real Estate Lake Realty

For full listing details, please scan:

