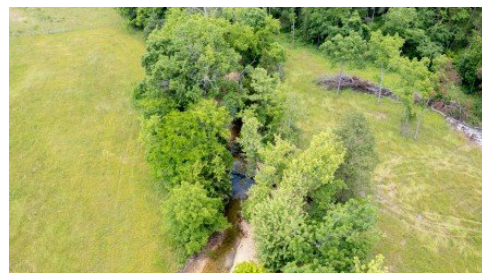


0000 State Highway Mm
Niangua, MO 65713



Powered by lakefrontexpo.com

MLS# SOM60325242



\$750,000

92 acres in Niangua with a little bit of everything. Open pasture, woods, ponds, trails, and plenty of wildlife. Myers Branch runs through the property, and there's even a cave to explore. New ATV/hiking trails have already been cut through the land, making it easy to enjoy all the property has to offer. The large clearing would make a great spot for a home, hunting cabin, or weekend getaway. Property already has a new driveway, electricity, well, sheds, and electric fencing for horses. Located on the edge of Webster County with lots of potential and room to make it your own.



Autumn Joiner-Clark
Phone: (417) 839-5085
Century Realty, SIQ, Inc.

For full listing details, please scan:

