

**530 Dade 215**  
Everton, MO 65646



Powered by lakefrontexpo.com

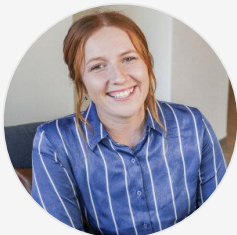
MLS# SOM60323812



**\$550,000**

**3 Bedrooms | 2 Bathrooms**

Tucked into the rolling countryside of Dade County, this custom built farmhouse on nearly 40 acres offers the kind of setup buyers spend years searching for. From the moment you pull in, you can feel the care and pride poured into this property. Built with both comfort and functionality in mind, this 3 bedroom, 2 bath home creates the perfect balance of peaceful country living and working farm practicality. Inside, you're welcomed by a stunning wood burning rock fireplace that anchors the main living space and gives the home a warm, inviting feel. The layout offers plenty of room for entertaining, gathering with family, or simply slowing down and enjoying the quiet of country life. One of the standout features of the home is the master suite's private sunroom, the perfect spot to sip your morning coffee while overlooking your farm and watching the day begin. Outside is where this property truly shines. Nearly 40 acres of open, usable ground provide endless possibilities for cattle, horses, hobby farming, or simply enjoying your own stretch of land. The fencing is already in place and ready for livestock to be turned out immediately, making this property functional from day one. The detached garage with workshop space gives you room for projects, tools, and equipment, while the additional shop offers even more storage for machinery, hay, or



**Haleigh Ankrom**  
Phone: (417) 298-4088  
Billy Bruce Realty

For full listing details, please scan:

