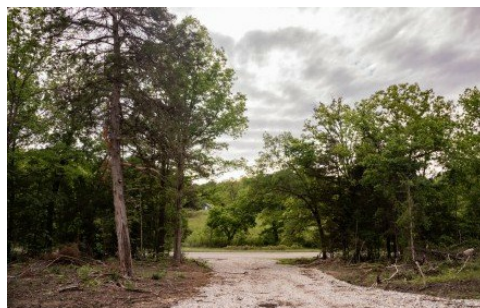


**000 State Highway Y**  
Myrtle, MO 65778



Powered by lakefrontexpo.com

**MLS# SOM60323642**



**\$102,000**

33.5 acres m/l with over 1/2 mile of paved frontage on Y Highway. This tract offers strong privacy and easy access in the Missouri Ozarks. The property includes several level areas with good potential for a homesite or cabin. With some trees removed, some of these build sites could offer excellent views. This property offers so many possibilities from future building to recreational use. Located approximately 20 minutes from Thayer, MO, with additional small towns within similar driving distance. The Eleven Point River is very close -- just a short drive of approximately 2.5 miles. Outdoor attractions nearby also include the Mark Twain National Forest and other rivers such as Spring and Warm Fork. With no restrictions and abundant wildlife, this acreage is well-suited for residential, hunting, or private retreat purposes.



**Darron Combs**

Phone: (417) 280-6251

Century 21 Combs & Associates

For full listing details, please scan:

