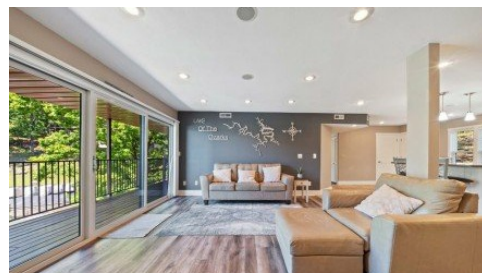


221 Circle Edge Drive 27-1B
Lake Ozark, MO 65049



Powered by lakefrontexpo.com

MLS# 3587333



\$349,500

4 Bedrooms | 2 Bathrooms | 1,437 Sqft

This updated 4-bedroom lakefront condo on Horseshoe Bend delivers the space, modern finishes, and prime location buyers search for on Lake of the Ozarks. Fully renovated down to the studs in 2009, it features durable LVP and tile flooring, an open floor plan, and a spacious, walk-around kitchen island perfect for cooking, gathering, and entertaining. The deck offers peaceful lake views, overlooks your boat slip, and provides a front-row seat to the iconic holiday fireworks. The complex is known for being quiet, well-managed, and beautifully maintained, with amenities including a pool and clubhouse. Mature trees and expansive grounds create a park-like setting ideal for dog walks and outdoor relaxation. Conveniently located just past the Lodge of the Four Seasons, this sought-after Horseshoe Bend address offers quick access to restaurants, golf, marinas, and lake attractions. With its rare bedroom count, updated interior, and premium lakefront setting, this condo is a standout choice for full-time living, vacation use. Includes all furnishing as well as a 10'x28' boat slip and #4000 boat hoist!! Don't miss this beauty! Golf cart for sale to complete the package!



PATRICIA MINICH

Network Global, LLC

For full listing details, please scan:

