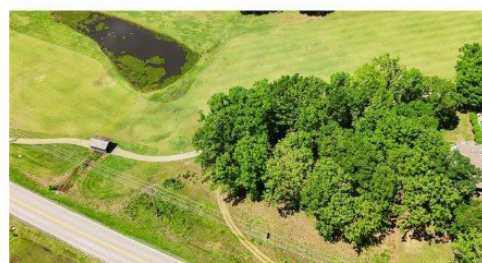


TBD Apache Drive
Laurie, MO 65037



Powered by lakefrontexpo.com

MLS# 3587108



\$22,400

Flat, usable ground is getting harder to find especially in a spot like this. This half-acre lot in Indian Creek Golf Club gives you a rare combination of build-ready terrain, mature trees for character, and a location that puts you right in the middle of everything. Situated directly across from the movie theater in Laurie, you're just minutes from local favorites for dining, drinks, and everyday essentials without sacrificing the quieter feel of a golf course community. Whether you're planning a full-time residence, weekend escape, or future investment, this lot offers: Level ground (lower build costs, easier design options) Scattered mature trees for natural shade and curb appeal Golf course community setting Quick access to shopping, restaurants, and entertainment Convenient proximity to the Lake of the Ozarks area Opportunities like this don't come up often a clean, flat lot in a central location that actually makes daily living easy. Build what you want. Enjoy where you are.



Kallen Curry

Weichert, Realtors - Laurie Realty

For full listing details, please scan:

