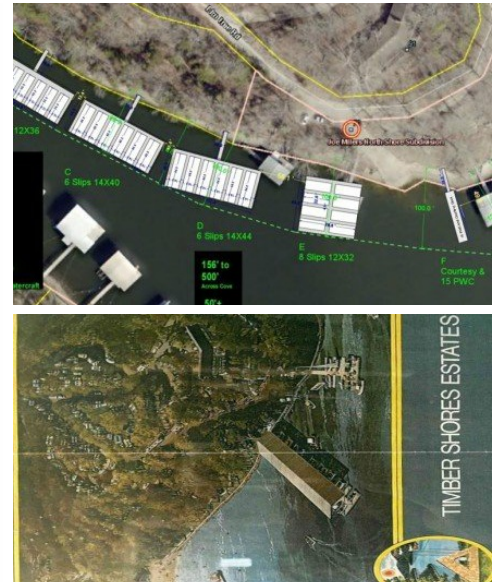
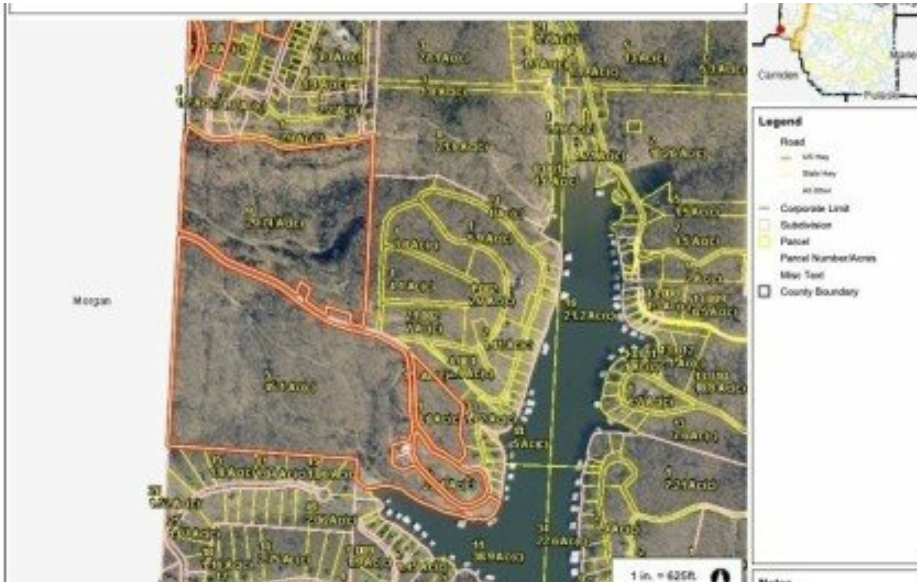


# Elm Tree Road Rocky Mount, MO 65072



Powered by lakefrontexpo.com

MLS# 3587080



## \$3,750,000

Incomparable! Unlimited possibilities! Unbelievable Views! This historic campground is located at the 3.5 mm in Jackson Branch Cove, formally known as Timber Shore Estates and Endless Trails Campground. 127 +/- acres of property and 1200 + ft of shoreline, a natural beach, and a large commercial concrete boat ramp add to the unlimited possibilities for this property. Located in Miller County so there are no zoning limitations on the use of this property. Perfectly suited for a private estate, condominiums, subdivision, tiny homes, restaurant and bar, RV campground, and boat dock manufacturers. Less than a 15 minute blacktop drive to the property from Bagnell Dam.



**DEE ELLSWORTH**

Legacy Farm & Land Specialist, LLC

For full listing details, please scan:

