

000 County Road 4300
West Plains, MO 65775



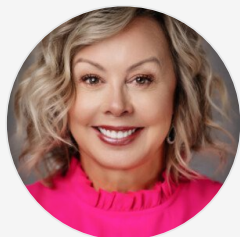
Powered by lakefrontexpo.com

MLS# SOM60322495



\$130,000

Enjoy the best of country living with this stunning 20 acre tract featuring a stocked pond and beautiful building sites. All improved pasture, 20 acres hay ground. Mature Oaks for shade; Sassafras and Persimmon as well. The land has had no chemical fertilizer or herbicides for 4 years. Just 2.5 miles from the city limits; this property offers privacy without isolation and is ideal for a home, cabin, or recreational getaway. Another 20 acre parcel is available for \$130,000.



Angela M. Worley
Phone: (417) 372-5420
Assurance Realty

For full listing details, please scan:

