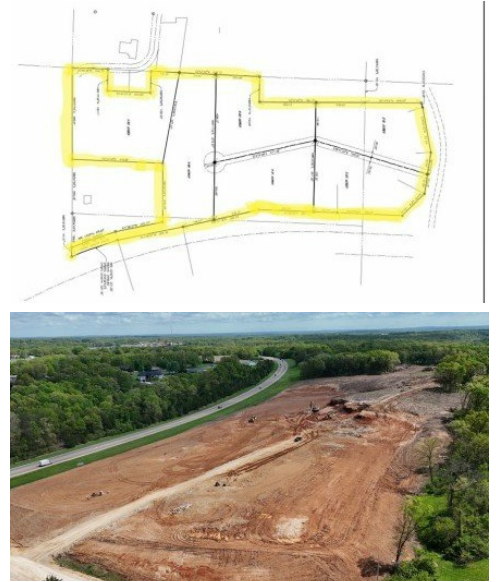


TBD VFW Road
Eldon, MO 65026



Powered by lakefrontexpo.com

MLS# 3587040



\$699,000

UNRIVALED OPPORTUNITY MEETS ULTIMATE FREEDOM WITH MASSIVE HIGHWAY EXPOSURE. Rarely do we see a parcel of this magnitude hit the market offering both the scale for a luxury estate and the high-traffic visibility for a premier development. Situated just outside the Eldon city limits, this expansive 20-acre tract boasts over 1,000 feet of prime Business 52 frontage, ensuring your investment stays front and center. The topography is a developer's dream as approximately 13 acres have already been leveled, saving you significant overhead in site prep and excavation. It is shovel-ready and waiting for your vision. With absolutely no restrictions, you enjoy the rarest luxury in today's market: total autonomy. There are no HOAs and no architectural reviews. Whether you are planning a custom barndominium, a commercial storefront, or a private hobby farm, the choice is entirely yours. Enjoy the peace of rural Missouri living while remaining minutes from Eldon amenities and the Lake of the Ozarks. This property provides the perfect balance of cleared, usable acreage and strategic highway access. Land with this much level acreage in Miller County is a rare find. Secure your footprint today.



Amy Dunn

Dunn and Associates LLC

For full listing details, please scan:

