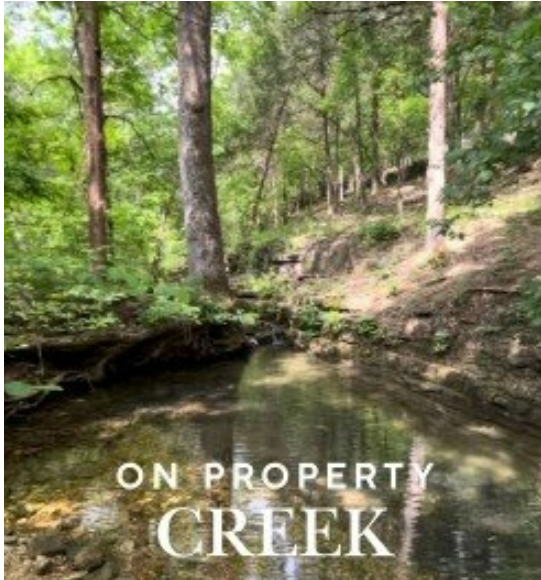


000 Appaloosa
Saddlebrooke, MO 65630



Powered by lakefrontexpo.com

MLS# SOM60321611



HIGHLIGHTS

UTILITIES ON SITE
BURIED ELECTRICAL

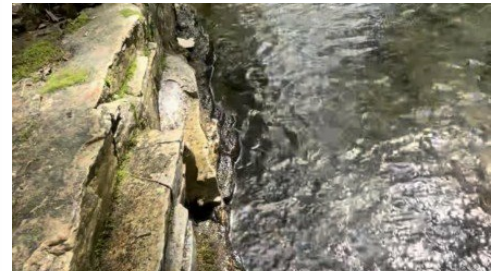
GORGEOUS
CREEKSIDE PARKS

POOL

PICKLEBALL

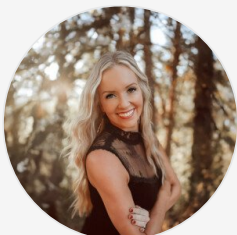
TENNIS

PLAY SCAPE FOR KIDS



\$40,444

Tucked inside the highly sought-after Saddlebrooke community, this beautiful 1.1-acre lot offers the perfect balance of privacy, convenience, and natural charm. The gently sloping terrain makes it ideal for a walkout basement home, giving you the opportunity to maximize both space and scenic views. A peaceful creek runs entirely within the property, adding a rare and tranquil feature that sets this lot apart. The land is easy to maintain while still providing a sense of seclusion--perfect for those wanting a private retreat without the burden of extensive upkeep. Enjoy all the perks of Saddlebrooke living, including well-kept surroundings, a pool, creekside parks, tennis courts, pickleball courts, community social calendar, and a welcoming atmosphere, all just a short drive to Branson or Springfield. This is a prime opportunity to build your dream home in one of the area's most desirable neighborhoods.



Valerie C. Childress

Phone: (417) 350-5254

Keller Williams

For full listing details, please scan:

