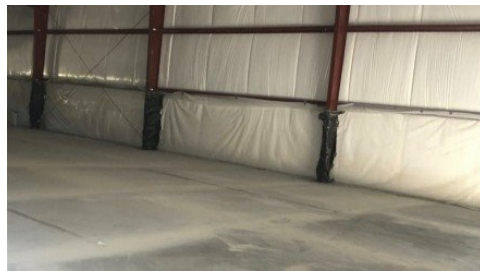


80 Industrial Flats Road
Eldon, MO 65026



Powered by lakefrontexpo.com

MLS# 3586654



\$620,000

5,000 Sqft

Only ONE 5,000 sq ft. Industrial Bldg or Man Cave/Warehouse space remaining just minutes from Lake Ozark and Osage Beach, conveniently located right off Highway 54. Prewitt's Industrial Park features numerous options to suit any buyer. NO ZONING or county restrictions, which allows for industrial, storage or most any use for this property with approval from the developer. This unit is 5,000 sq. ft. with ceiling heights of 20 foot high and two large Overhead doors (16ft wide by 18 ft. high) with an entrance door with windows for natural light. Included amenities are 1,000 sq ft office, stubbed for bathrooms, concrete floors with floor drains, HVAC, LED lighting, all R-19 insulation, 8ft interior liners, trash, water, sewer, RV dump, cleanout stations, exterior lighting, paved roads and landscaping. Call for build to suit options. Secure the last spot today! Three Phase Electric available.



ED SCHMIDT-TEAM

EXP Realty, LLC

For full listing details, please scan:

