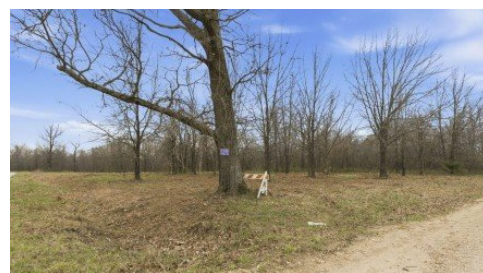
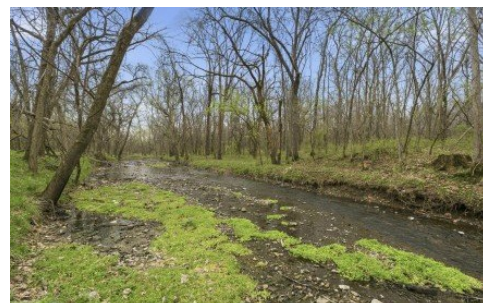


# Lot 5 Ireson Estates Stockton, MO 65785



Powered by lakefrontexpo.com

MLS# SOM60321439



## \$115,560

Located just outside of Stockton, Missouri and less than five minutes from Stockton Lake, these tracts offer an opportunity to build in a quiet rural setting with convenient access to one of southwest Missouri's top recreational lakes. Multiple tracts ranging from approximately 5 to 12 acres feature rolling terrain, a mix of timber and open ground, and scattered building sites suited for walkout basements or single level construction. The land is primarily covered in mature hardwoods with pockets of cedar, providing privacy while remaining usable. A seasonal creek known as Town Branch runs through portions of the property, adding character and a natural setting that supports wildlife and enhances the overall landscape. White tailed deer and wild turkey are commonly found throughout the area. Electricity is available nearby, and access is provided by gravel road just a short distance off blacktop, offering a balance of convenience and seclusion. The property is subject to restrictions intended to maintain quality and consistency, including residential use, minimum square footage requirements, and limitations on mobile or manufactured homes. These tracts offer a strong combination of location, natural setting, and building potential just outside of Stockton and near Stockton Lake.



**Billy Bruce**  
Phone: (417) 399-4800  
Billy Bruce Realty

For full listing details, please scan:

