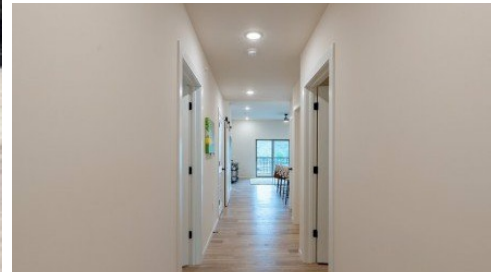


700 Pershing Dr. #202
Camdenton, MO 65020



Powered by lakefrontexpo.com

MLS# 3586644



\$450,000

3 Bedrooms | 3 Bathrooms | 1,334 Sqft

This second-floor (walk-in level) Ember Ridge condo checks all the boxes. Enjoy easy access, a spacious open layout with 3 full bathrooms, large pantry designed to comfortably accommodate guests. Featuring brand-new construction with rare steel framing and a clean, modern design. Located close to some of the lake's most popular waterfront dining and entertainment. Dock slips and PWC slips available. Whether you plan to use it yourself or maximize its vacation rental potential, this is an opportunity to get into one of the lake's newest developments. Photos are of Model Unit #205 and are used to showcase design and finishes layout and selections may vary.



AMANDA ELIZABETH MORGAN

ReeceNichols Real Estate

For full listing details, please scan:

