

3133 State Highway W & Highway 14
Dora, MO 65637



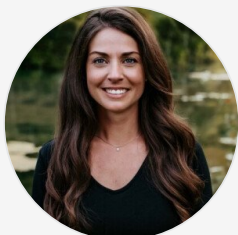
Powered by lakefrontexpo.com

MLS# SOM60320788



\$244,200

Land For Sale in Douglas County! Located between Drury and Dora is 66+/- acres with road frontage on 3 sides- Highway 14 on the south side, Highway W on the east, and County Road 255 on the west. Great location with great views! There is a beautiful large pond, a wet weather creek, a mix of mature hardwood timber, towering pines and about 3 acres that used to be open that is now grown up. Excellent habitat, there is deer and turkey sign everywhere! There is an old house, a well, and a few outbuildings. It has rolling hills, bottom ground, and big flat ridge with gorgeous views to the south and west. A perfect place for your new home, or just to hunt! Just 30+/- minutes to Mountain Grove and West Plains, and 1.5+/- hours to 60&65 in Springfield. Near Mark Twain National Forest, Hodgson Water Mill and close to the many rivers, lakes and other sights that the Missouri Ozarks has to offer!



Christine Schuette

Phone: (417) 349-5404

37 North Realty - Mountain Grove

For full listing details, please scan:

