

000 N
Mountain Grove, MO 65711



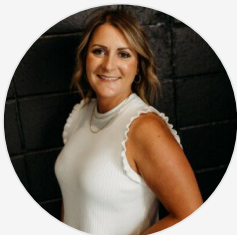
Powered by lakefrontexpo.com

MLS# SOM60306627



\$49,900

Homesteading dream! This 5.5 acre m/l property is privately located less than ten minutes from Walmart in Mountain Grove, Missouri. Located just off of N Hwy, this property has a deeded easement access from the entrance of the N Hwy. frontage property. You will find a small STOCKED pond here with plenty of room for building your home and room for animals to run. Call today and schedule your showing!



Sarah Beller

Phone: (417) 349-0059

Century 21 Hometown Properties

For full listing details, please scan:

