

**27767 Farm Rd 1075**  
Seligman, MO 65745



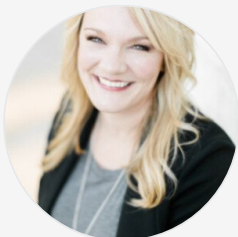
Powered by lakefrontexpo.com

MLS# SOM60318541



**\$240,000**

Discover the perfect blend of privacy and convenience on this 24 acre property. Nestled a couple of miles off Hwy 112, this land offers a peaceful, secluded setting with mature fruit trees, a well, and a septic already in place - making it ideal for your dream home or hobby farm. Additions include a 25 X 60 shop with concrete floors, steel tusses and a storm shelter; small cow/goat barn, one car garage, pond and chicken coop.



**Amanda E Merry**

Phone: (417) 830-9906

Murney Associates - Primrose

For full listing details, please scan:

