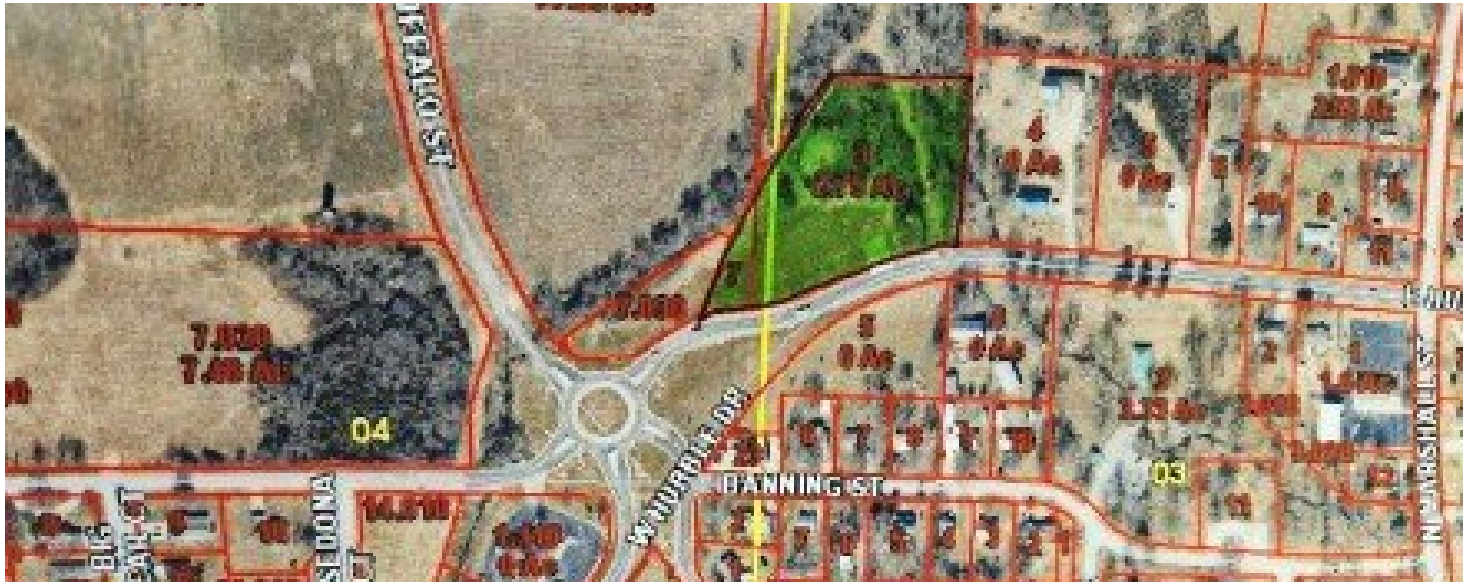


**000 Hubble**  
Marshfield, MO 65706



Powered by lakefrontexpo.com

MLS# SOM60253925



**\$149,900**

Wonderful location for any business that depends on high traffic count for revenue! Zoned B-3 and ideally situated on roundabout along historic Rt 66 (Hubble), this three acre tract offers diverse terrain with a small spring branch running along north end. This area is filling out quickly! See today!



**Douglas A Andrews**  
Phone: (417) 859-2700  
Century Realty, SIQ, Inc.

For full listing details, please scan:

