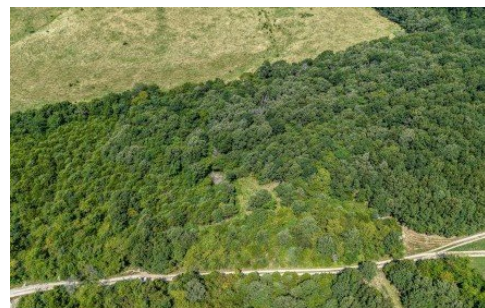


**000 Beulah Creek**  
Marshfield, MO 65706



Powered by lakefrontexpo.com

MLS# SOM60301831



**\$71,500**

Escape to the perfect blend of privacy and convenience on this mostly wooded 5.47-acre tract, nestled just minutes outside the city limits with quick access to I-44. Located at the back of an upscale, peaceful subdivision, this lot offers ultimate privacy on a quiet private road--currently in the process of completion. The owner has already done some clearing, making it easier to envision your dream build. Enjoy the natural beauty of the surroundings along with deeded rights and easement for the use and enjoyment of a nearby pond. Don't miss the chance to watch beautiful sunsets through the trees--it's the ideal setting for your custom home or private retreat. See MLS 60301912 for additional 5.26 available acres.



**Judith A Gault**  
Phone: (417) 689-2700  
Gault & Co. Realty, LLC

For full listing details, please scan:

