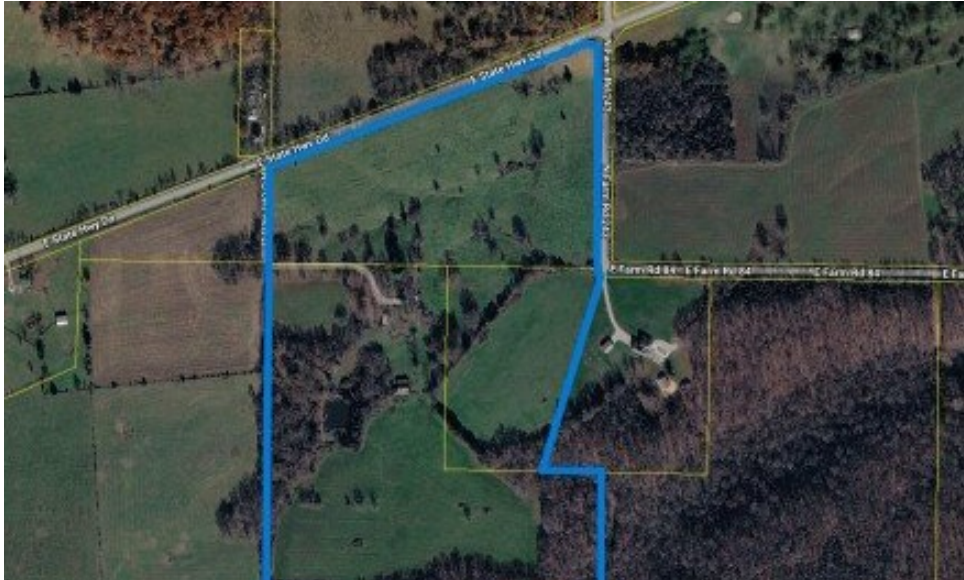


4885 Crows Nest
Strafford, MO 65757



Powered by lakefrontexpo.com

MLS# SOM60315167



\$1,430,750

57.23 acres across 3 parcels with approx. 1400 ft of frontage on HWY DD and 900 ft on Farm Road 243. This rolling farmland offers a rare blend of privacy, natural beauty, and future potential. The property is mostly open with tree lines along the edges, creating a quiet, tucked-away setting that feels secluded while still highly usable. An older farmhouse, barn, and several outbuildings are present on the property; however, they are being given little to no contributory value due to age and size. The primary value lies in the land itself--making this an excellent opportunity for someone looking to build a new residence, establish a private estate, or pursue future development or subdivision potential. Utilities are already in place with well, septic, electric, and propane on site. The acreage is fenced (some repair may be needed) and supports a strong wildlife presence, including abundant deer and turkey, adding recreational and hunting appeal. A versatile property suited for agricultural use, a rural homestead, or redevelopment. Parcel #s 1035100013, 1035100009, 1026400005



Paul Tillman
Phone: (417) 872-7468
Alpha Realty MO, LLC

For full listing details, please scan:

