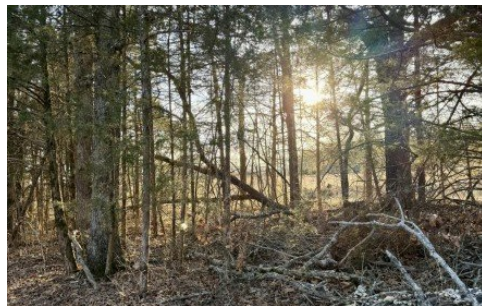


000 25th
Humansville, MO 65674



Powered by lakefrontexpo.com

MLS# SOM60314946



\$182,000

Located just south of Humansville and north of Bolivar in Polk County, this 28 acre more or less tract offers blacktop road frontage on two sides and a highly usable wooded setting. The property features a well balanced mix of hardwoods and evergreens with a strong oak base, providing both aesthetic appeal and long term timber value. Gently rolling terrain creates multiple potential building sites with natural seclusion, while established trails throughout the property allow for easy access and recreational use. This tract shows strong signs of wildlife activity, including white tailed deer bedding areas and wild turkey, making it an excellent option for hunting and outdoor enthusiasts. Electricity is nearby, and the layout of the land offers flexibility for a future home build, weekend retreat, or recreational getaway. With paved access, diverse timber, and a desirable location between Humansville and Bolivar, this property presents a solid opportunity to secure quality acreage in southwest Missouri. Call today to secure your piece of ground.



Billy Bruce
Phone: (417) 399-4800
Billy Bruce Realty

For full listing details, please scan:

