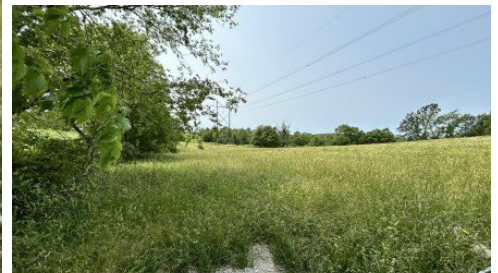


Lot 2 Farm Road 83
Springfield, MO 65802



Powered by lakefrontexpo.com

MLS# SOM60287677



\$150,000

This 10.17-acre tract (Lot 2) offers frontage on Farm Road 83 and Sac River frontage along the southern boundary. A scenic hilltop building site provides beautiful views of the river, making it an ideal location for a home or retreat. The property also features fertile bottomland, perfect for future crops and potential income generation. Seller will provide a survey. Seller will consider 1031-exchange and owner financing. Call agent for more details.



Jerome D Schweitzer
Phone: (417) 844-6852
Century 21 Integrity Group

For full listing details, please scan:

