

29923 Ivy
Carl Junction, MO 64834



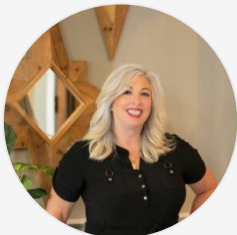
Powered by lakefrontexpo.com

MLS# SOM60266826



\$75,000

Discover your own slice of woodland paradise on this expansive 4.38-acre lot at 29923 Ivy Rd, Carl Junction, MO. Nestled among towering trees, this property offers a secluded escape where you can immerse yourself in nature's beauty. Whether you're envisioning a cozy cabin retreat or simply want to enjoy the tranquility of the great outdoors, this wooded oasis provides the perfect backdrop. With utilities on hand and nearby amenities for convenience, this is your chance to create the peaceful rural lifestyle you've always dreamed of. Come and explore the endless possibilities - schedule a showing today!



Mary Hunt
Phone: (417) 840-1723
Cantrell Real Estate

For full listing details, please scan:

