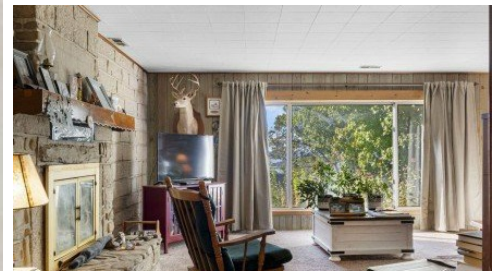


4616 State Highway 265
Branson, MO 65616



Powered by lakefrontexpo.com

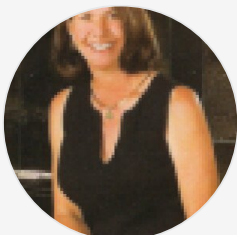
MLS# SOM60308413



\$700,000

3 Bedrooms | 2 Bathrooms

Beautiful 39.7 (+/-) acre property just outside Branson city limits -- ideal for a hobby farm, livestock, or equestrian setup. Enjoy rolling pasture, wooded areas, and Table Rock Lake views from the front ridge. With over 2,100 feet of Hwy 265 frontage, the land offers excellent access and visibility. Includes electricity, RV hookups, multiple outbuildings, and a billboard for added income potential. The 3-bedroom, 2-bath home features a main-level master suite, a non-conforming bedroom easily converted with a closet, and a basement cellar that doubles as a concrete tornado shelter. A rustic old cabin adds character and potential. Just 10 minutes from Silver Dollar City, Table Rock Lake, and the Branson Strip -- a perfect blend of farm life and convenience.



Kandis Davis

Phone: (417) 337-3330

Kandis Davis Real Estate LLC

For full listing details, please scan:

