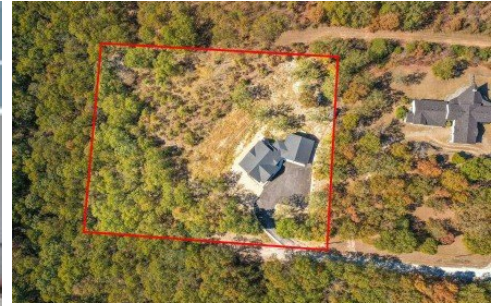


298 Peach
Ridgedale, MO 65739



Powered by lakefrontexpo.com

MLS# SOM60317824



\$795,000

4 Bedrooms | 4.5 Bathrooms | 3,500 Sqft

Experience elevated lake living in this stunning new construction retreat set on 1.5 private acres overlooking breathtaking Table Rock Lake. Designed to capture panoramic water views from nearly every room, this exceptional home offers 4 bedrooms (or 3 bedrooms plus a private office), 3.5 baths, and a thoughtfully designed open floor plan with soaring vaulted ceilings and exposed beams. The chef's kitchen is the heart of the home, featuring granite countertops, an oversized island with bar seating, stainless steel appliances, and an expansive walk-in pantry--perfect for entertaining. The luxurious primary suite offers private deck access, a spa-inspired walk-in shower, and an impressive walk-in closet with convenient laundry hookups. Additional living spaces include a spacious family room, recreation area, and just wait until you see this oversized garage complete with workshop space. This offers tons of extra space for all of your lake toys! Step outside onto the expansive deck and take in sweeping lake views, unforgettable sunsets, and even seasonal fireworks from Top of the Rock, Big Cedar and Integrity Hills. Gather around the firepit and enjoy the peaceful setting surrounded by nature, all while benefiting from the privacy of an end-of-road location. Residents also enjoy access to Oakmont amenities including a pool and



Tim Parsons
Phone: (417) 229-3175
Keller Williams Tri-Lakes

For full listing details, please scan:

