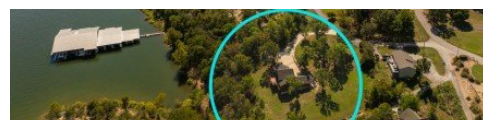


**206 Redwing**  
Kimberling City, MO 65686



Powered by lakefrontexpo.com

MLS# SOM60305939



**\$959,000**

**5 Bedrooms | 3 Bathrooms | 3,656 Sqft**

Lakefront gentle to the water! View of Tablerock Lake & the Kimberling City Bridge! THIS LOVELY HOME BOASTS LAKEVIEWS BOTH LIVING AREAS, BEDROOMS AND OFFERS A LARGE BACK DECK FOR ENJOYMENT AND ENTERTAINING. THIS LOVELY LAKEFRONT HOME NOT ONLY OFFERS A 14 X 40 BOAT SLIP ADJACENT TO THE PROPERTY FOR AN ADDITIONAL \$85, 000, BUT THIS HOME ALSO OFFERS 2 ADDITIONAL LOTS (ONE LAKEFRONT ADJOINING THE OTHER) WITH TONS OF ELBOW ROOM ON BOTH SIDES WITH STREET ACCESS FOR A FUTURE SHOP/GARAGE BUILDING OR GUEST HOUSE. BOTH LOTS ARE OFFERED FOR AN ADDITIONAL \$75, 000!!!!RARE AND VALUABLE ASSETS!!! WITH WELL OVER 200' OF SHORELINE, THIS HOME IS IN A POPULAR LAKESIDE COMMUNITY KNOWN AS ARROWHEAD ESTATES. WITH 5 DEDICATED BEDROOMS, THIS LAKEFRONT HOME WILL SLEEP 17 GUESTS, MASTER HAS KING BED, THERE ARE ALSO 3 WITH QUEEN BEDS, ONE WITH A FULL BED. THERE ARE 2 DAYBEDS WITH TRUNDLE UNITS IN THE LOFT (HOME MOSTLY FURNISHED). LOCATED 10 MINUTES TO KIMBERLING CITY, HARTER HOUSE, POST OFFICE AND CLOSE TO THE MARINA.....7 MINUTES BY WATER TO THE GAS DOCK. BRING YOUR FAMILY AND MAKE THIS YOUR



**Cindy L Hodges**

Phone: (417) 880-6171

ReeceNichols -Kimberling City

For full listing details, please scan:

