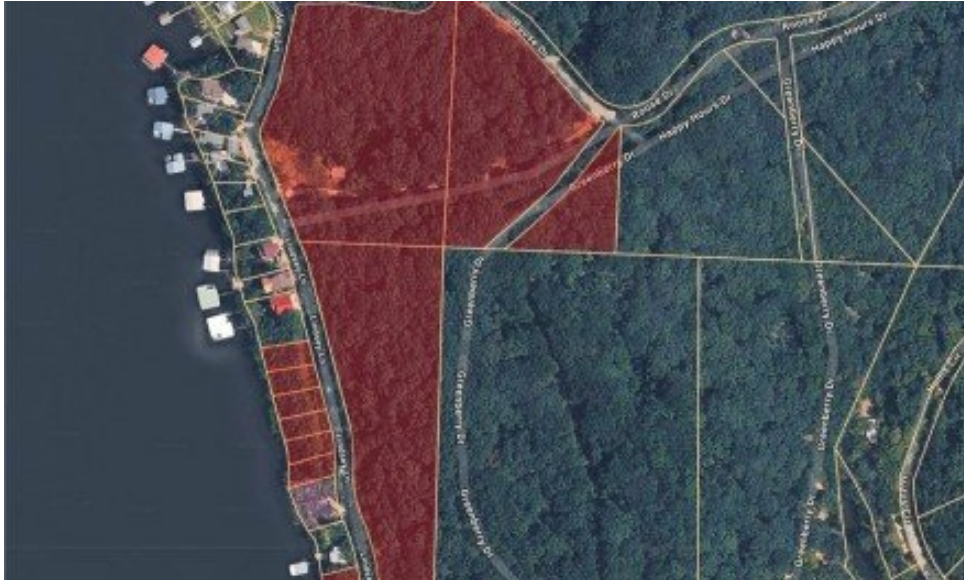


11.44 Acres Lyndsey Lane Rocky Mount, MO 65072



Powered by lakefrontexpo.com

MLS# 3586207



\$1,250,000

Discover the perfect canvas for your lakefront vision with this exceptional 11.44-acre parcel boasting 355 feet of pristine shoreline on the Gravois Arm of the stunning Lake of the Ozarks. Located near Lindsey Ln in Rocky Mount, this expansive property offers an open slate for a private estate, a family compound, or a unique development. Convenience is already built-in with sewer on-site, saving you time and cost on infrastructure. Positioned in a prime location for "lake life" enthusiasts, you are just a short boat ride or drive away from iconic waterfront dining favorites like Jolly Rogers Grub & Grog, Coconuts, Lake Burger, Maggie's at the Lake, and not far from all the hotspots in Lake Ozark. Whether you re looking to build your dream home or secure a significant piece of lakefront acreage, this property combines the serenity of a massive lot with immediate access to the best entertainment the Lake has to offer.



PEGGY LYNN ALBERS

Albers Real Estate Advisors

For full listing details, please scan:

