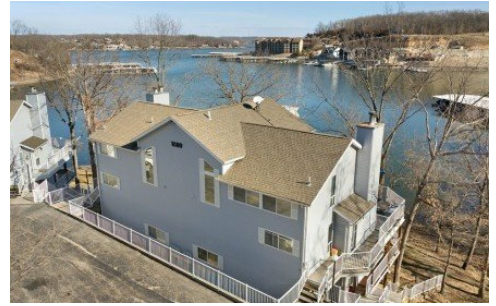


**1089 Buckingham Drive 1**  
Camdenton, MO 65020



Powered by lakefrontexpo.com

**MLS# 3583535**



**\$384,500**

**2 Bedrooms | 2 Bathrooms | 1,538 Sqft**

TURNKEY 2-bedroom, 2-bath end-unit condo located at the Shores of Camelot in Camdenton positioned at MM 1 of the Big Niangua, this lakefront residence offers extraordinary panoramic views. The 2-level layout features a spacious loft that can easily be converted into a 3rd bedroom, providing flexible living options. Easy access w/only 3 steps up from parking & a short walk to the 10x28 boat slip w/hoist, visible from the condo. A 2-car garage w/10x20 pull-down attic storage is in a quiet, no-through-traffic area of the complex. Updates include New HVAC heat pump; LVP & carpet; window treatments; an updated kitchen w/granite countertop, farm sink, accent lighting; sun-resistant windows; & decorative glass entry door. The open concept showcases vaulted ceilings, electric fireplace w/wood-burning option, & a wall of windows framing stunning lake views. Step onto the expansive main-level deck w/stamped concrete flooring & a motorized awning. Glass inlays in the loft railing enhance the lake views, while the primary suite offers its own private martini deck. Surrounded by a wooded buffer for added privacy & located just 2 miles from Ozark Amphitheater. Start living the lake dream today!



**Annamarie Hopkins**

Ozark Realty

For full listing details, please scan:

