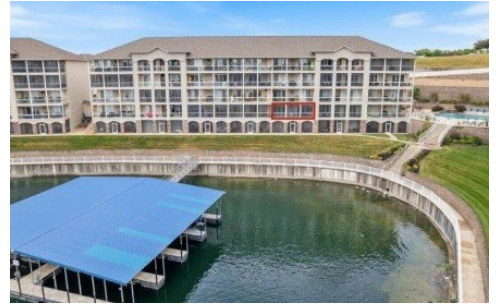


**1215 Lands End Parkway 623**  
Osage Beach, MO 65065



Powered by lakefrontexpo.com

**MLS# 3583432**



**\$415,000**

**3 Bedrooms | 2 Bathrooms | 1,365 Sqft**

Discover easy lake living in this turnkey 3-bedroom, 2-bath condo in exclusive Lands End. Walk-in access with no steps and elevator convenience located on the same level as the pool. The open floor plan features a cozy fireplace and flows to a covered deck with stunning main channel views. Watch boats, sunsets, and fireworks from the new Oasis at Lakeport just across the channel. The primary suite offers lake views, deck access, jetted tub, and walk-in shower. Available within the complex is a 14x40 boat slip with wave break protection, all right at the 19 mile marker. Resort amenities include lakefront pool, lazy river, fitness center, clubhouse, and playground. Comes largely furnished and ready to enjoy or rent immediately nightly rentals permitted. Perfect as a personal retreat or income-producing investment. Your lake lifestyle awaits at Lands End.



**JASON WHITTLE**

RE/MAX Lake of the Ozarks

For full listing details, please scan:

