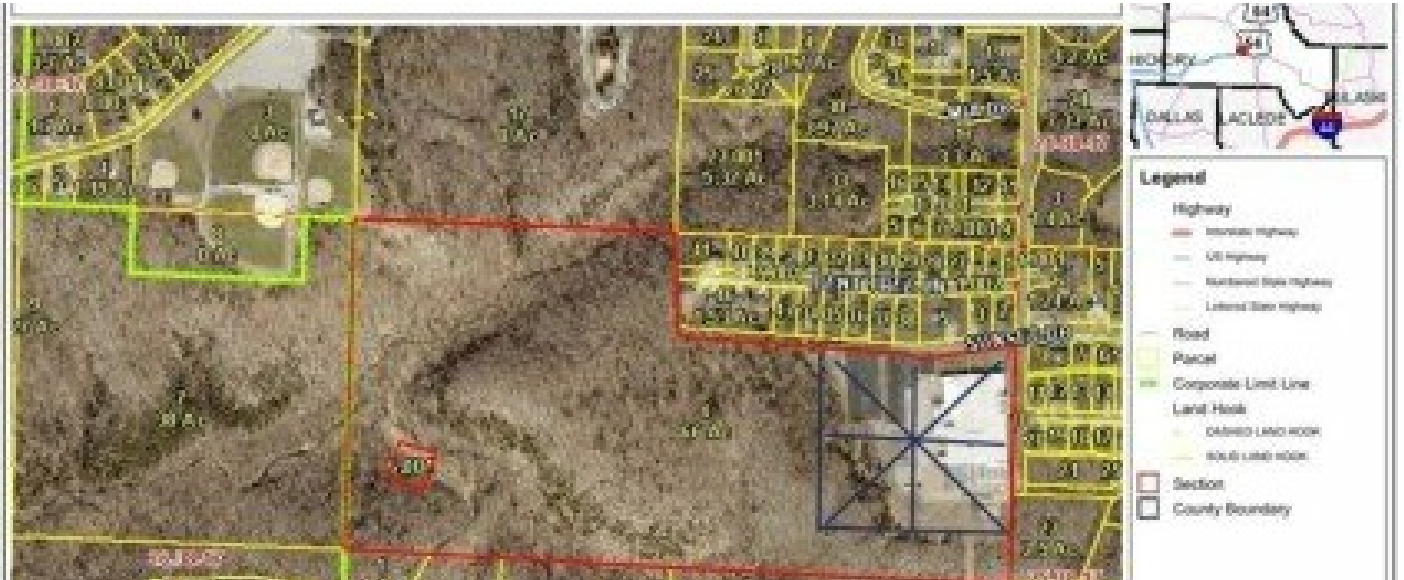


**221 Sunset Drive**  
Camdenton, MO 65020



Powered by lakefrontexpo.com

**MLS# 3580388**



**\$660,000**

Discover an exceptional opportunity with this expansive 60-acre +/- tract of land, ideally located in Camdenton city limits and offering unmatched development potential. This property is a blank canvas for visionary investors, developers, or community planners. Whether you're envisioning a residential or retirement community, townhomes, or even an industrial park, this land supports multiple uses.



**BOB LINDNER**  
EXP Realty, LLC

For full listing details, please scan:

