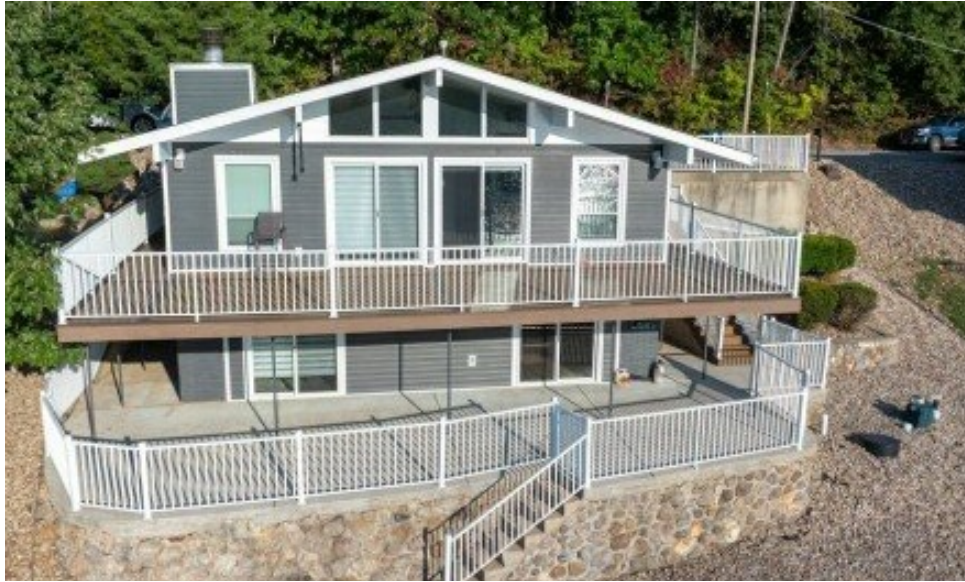


350 Heart Lane Point
Linn Creek, MO 65052



Powered by lakefrontexpo.com

MLS# 3580385



\$699,990

3 Bedrooms | 2 Bathrooms | 1,536 Sqft

Welcome to lakefront living at the 28MM! This 3 bedroom, 2 bath home offers nearly 1, 600 sq.ft. on a very gentle lot with the rare combination of main channel views and cove protection with deep water. Perfect for boaters and lake lovers alike, you ll enjoy year-round peace of mind with protected water for your dock while still capturing those big lake views. All of the expensive updates are complete roof, siding, decking, and more making this a move-in ready property where you can start enjoying the lake immediately. The paved road winds through a neighborhood of million-dollar homes, offering both convenience and value. With parking available and room for a carport/garage, and a layout designed for comfort, this home is ideal for full-time living or a weekend getaway. Don t miss the chance to own an updated, gently sloping lakefront home in one of the most desirable areas of Lake of the Ozarks!



JASON WHITTLE

RE/MAX Lake of the Ozarks

For full listing details, please scan:

