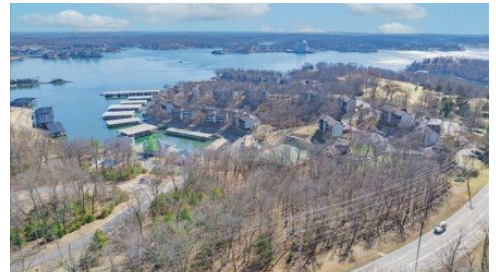
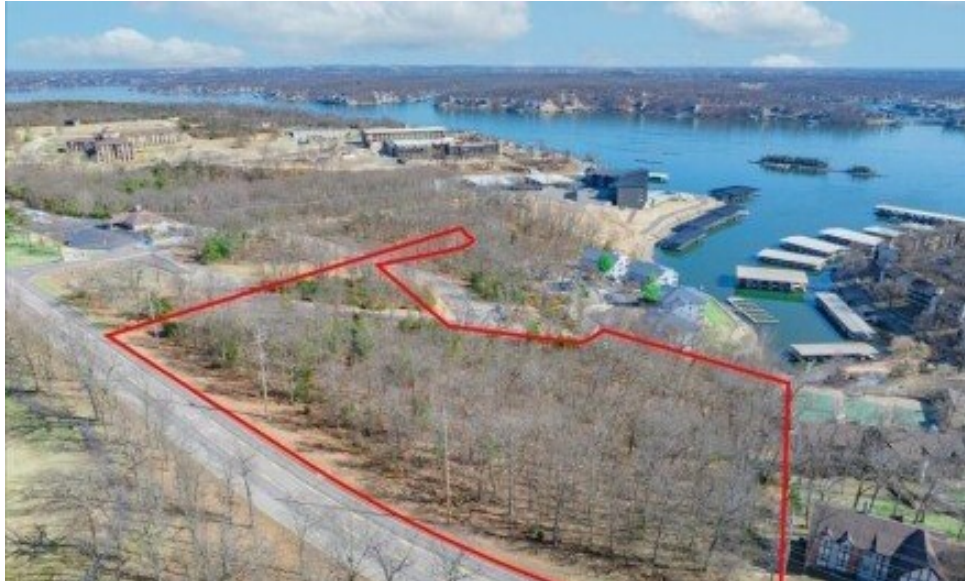


## **TBD Horseshoe Bend Parkway** Lake Ozark, MO 65049



Powered by [lakefrontexpo.com](http://lakefrontexpo.com)

**MLS# 3580121**



# **\$450,000**

**Prime 5-Acre Development Opportunity!** This 5-acre parcel presents an exceptional opportunity for developers and investors. Currently unlotted and not yet zoned, the property offers flexibility for a wide range of potential uses. Ideally located next to the new Aquatic Center and directly across from the Cove Golf Course, it sits in the heart of one of the lake area's most desirable growth corridors. A written agreement is in place between Vintage Landing and the seller regarding the small utility building located on the edge of the parcel. With close proximity to numerous restaurants, shopping, businesses, and recreational activities, this location combines visibility, accessibility, and high development potential making it an attractive investment for residential, commercial, or mixed-use projects.



**WEEG & ASSOCIATES LAKE OF THE OZARKS  
REAL ESTATE**

Keller Williams L.O. Realty

For full listing details, please scan:

