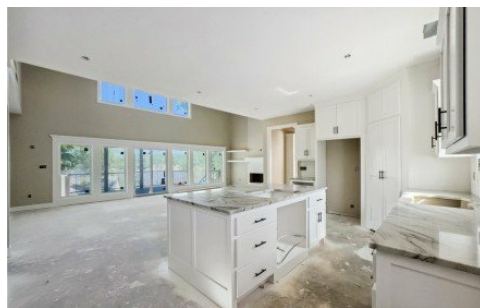


17 Eagles Pass
Climax Springs, MO 65324



Powered by lakefrontexpo.com

MLS# 3580020



\$550,000

3 Bedrooms | 3 Bathrooms | 1,645 Sqft

Smart Buyer Advantage! With an agreeable offer, the builder is prepared to help lower your costs whether that means a mortgage rate buydown or a credit toward closing expenses. This new lakeview construction at Shores of Eagle s View is just weeks from completion, offering input on final finishes. Step inside to find soaring 20+ ft ceilings, a wall of windows framing lake views, and a warm modern design that feels instantly welcoming. The main level features open living, a custom kitchen with quartz countertops, a walk-in pantry, and a spacious island for gathering. The primary suite includes a tiled walk-in shower & walk-in closet. Upstairs, two additional bedrooms and a full bath offer flexible space for family, guests, or a home office. Other highlights include vinyl flooring, smart siding, a level driveway, and a gentle backyard. Community dock with available slips. Private well, community sewer, and fiber internet. Located at the 53 MM, this home is perfect for those wanting new construction, quality finishes, and lake access at an approachable price point. With drywall, cabinetry, and finishes already in place, now s your chance to secure it before completion.



Joseph Cope

Coldwell Banker Lake Country

For full listing details, please scan:

