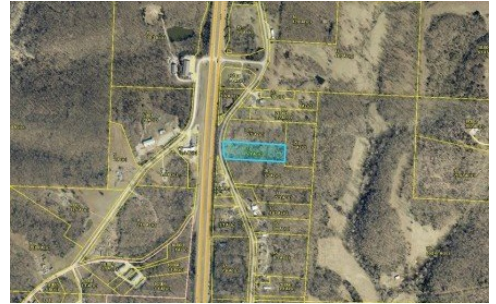


5.1 Acres Midway Road Eldon, MO 65026



Powered by lakefrontexpo.com

MLS# 3579579



\$62,500

Tucked just off Highway 54 on Midway Road, this 5.1-acre parcel offers a peaceful, wooded setting with convenient access to main roads. Whether you're dreaming of building a private home, weekend cabin, or investing in land, this beautiful lot provides a perfect blend of seclusion and accessibility. Utilities nearby. No known restrictions. Don't miss your opportunity to own a slice of nature close to town!



PEGGY LYNN ALBERS

Albers Real Estate Advisors

For full listing details, please scan:

