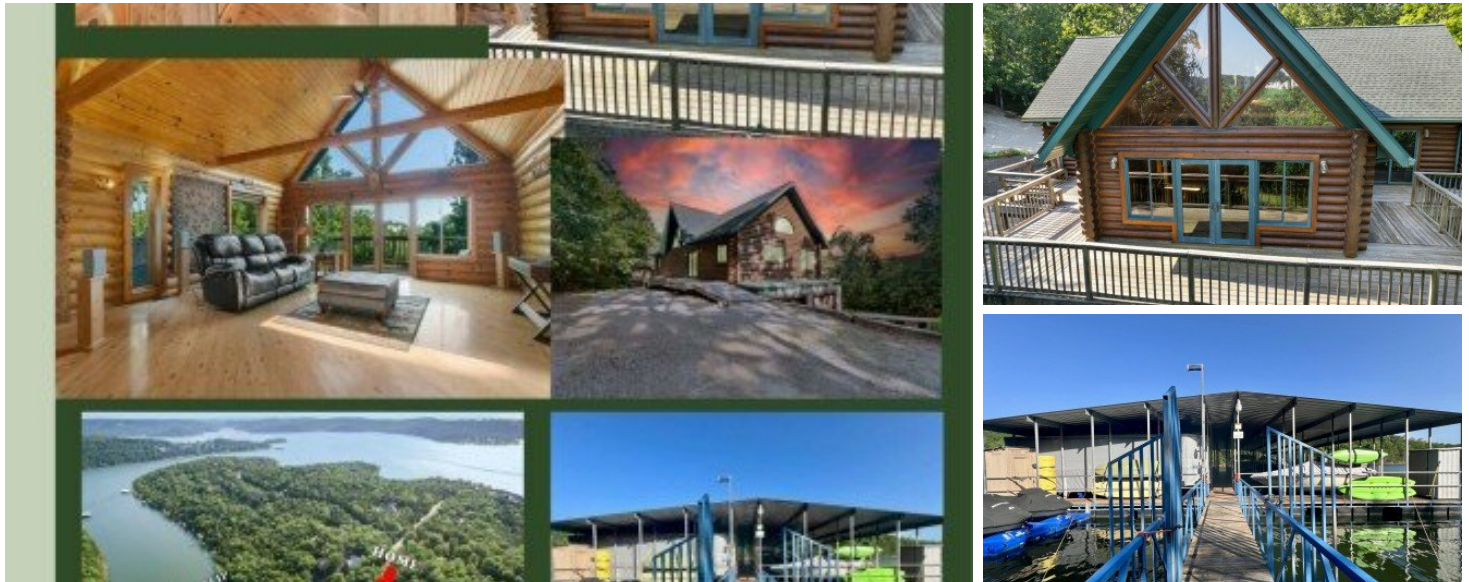


1829 Pokeberry
Lampe, MO 65681



Powered by lakefrontexpo.com

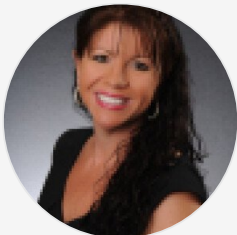
MLS# 60299717



\$649,000

3 Bedrooms | 4 Bathrooms | 2,581 Sqft

Price reductions reflect the seller's desire to sell quickly - due to health reasons she has left her beautiful home and moved to be with family. Instant Equity / Table Rock Lake Front Property! This Custom Built Log Home on 1.3 +/- acres is offered at \$199,000 below Appraised Value and a nearby 10x28 BOAT SLIP with jet ski lift is available for additional funds. This is a **MUST SEE** property with 150' +/- of lake frontage. Privately nestled in the mature trees you will find this gorgeous real log home with wrap around porch and newer roof (just 2 years old!) Be greeted by the vaulted wood beams and the incredible natural light. The open floor plan is inviting and impressive, housing the home's spacious kitchen that features tons of cabinetry, stainless steel appliances (including a new / never used dishwasher,) double oven, bar, and a dream pantry with an additional refrigerator. The main floor also features a beautiful dining space, a living room with awesome views, and pellet stove (a pallet of pellets will convey.) Just off the living room you will find a half bath for guests, and French doors that will take you to the home's primary bedroom suite. The suite features a walk in closet - with washer & dryer, and a spa-like bathroom that includes a large walk in shower, spa bath (with options galore,) heated towel rack, heated tiled flooring, and vanity. The lower



Lacey Sanders

Phone: (417) 294-2662

Keller Williams Tri-Lakes

For full listing details, please scan:

