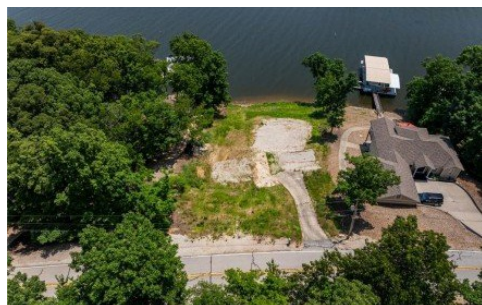


**1010 Linn Creek Drive**  
Lake Ozark, MO 65049



Powered by lakefrontexpo.com

**MLS# 3578389**



**\$364,900**

100' of lakefront x 210' deep in a great cove off of HH. This is your chance to live in a great neighborhood but not have to be restricted by Four Seasons governance. This buildable lot is located on Horseshoe Bend off Cherokee Road. Close to everything fun by land and water. Large cove, deep water and room for a huge dock. With 100 feet on both the street side and lakeside you have a great footprint for both a home and dock. Property is large enough for a 5-6 bedroom house with a pool, large garage and plenty of parking. A majority of excavation has been completed and an existing drive which will be convenient for construction is in place. The old foundation you may find in old pics has been removed and lot is ready to go. No HOA fees.



**MATTHEW JAMES SCHRIMPF**

BHHS Lake Ozark Realty

For full listing details, please scan:

