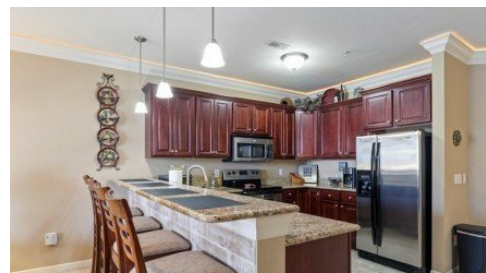


1205 Lands End Parkway 512
Osage Beach, MO 65065



Powered by lakefrontexpo.com

MLS# 3577303



\$480,000

3 Bedrooms | 2 Bathrooms

Complete Waterfront Package with No-Step Entry via the elevator from the parking lot. Includes 32 ft. boat slip with tri-toon lift and a PWC slip. You'll love the main channel views at the 19 MM across from Dog Days and the upcoming Oasis at Lakeport Theme Park opening later in 2025. Imagine the fireworks and Shootout 2025 boats you'll be able to enjoy viewing as they go by. This is the best action intersection at the LOTO! Condo boasts 9 ft. ceilings, a gorgeous kitchen with granite countertops and SS appliances and a primary bedroom with access to the waterfront covered deck. En Suite with whirlpool tub and walk-in shower, double bowl vanity and a walk-in closet. Bedroom 2 is connected to the updated hall bathroom with walk-in shower and is across from bedroom 3. Newer hot water heater too! Nightly Rentals Allowed. This family vacation home has never been rented and has been well maintained by its beloved owners, but investors are welcome at Lands' End. Enjoy the zero entry Pool, the Lazy River Pool, the kid's Splash Pad Pool, a playground, a large clubhouse with pool table and seating areas, an exercise facility all in the heart of Osage Beach near fun and fine dining nearby.



Sandi Alexander

RE/MAX Edge

For full listing details, please scan:

