

**252 Settlers Cove**  
Kimberling City, MO 65686



Powered by lakefrontexpo.com

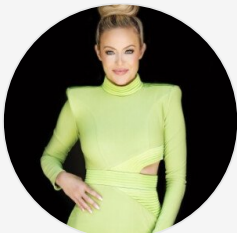
**MLS# 60292058**



**\$1,100,000**

**7 Bedrooms | 7 Bathrooms | 4,654 Sqft**

Welcome to your ultimate Table Rock Lake escape--where modern luxury, breathtaking panoramic views, and unforgettable memories await. Perched high in the coveted Wilderness Mountain community, this is the pinnacle of lakefront luxury where it redefines what it means to "get away from it all"--without sacrificing style, comfort, or convenience. From the moment you arrive, you're greeted by one of the most spectacular, unobstructed views of Table Rock Lake you'll find anywhere. Soak it all in from expansive double-level decks, where the sky melts into the water and every sunset feels like it was painted just for you. Step inside to find a perfect balance of high-end finishes and warm, inviting design. A floor-to-ceiling stone fireplace anchors the spacious main living area, wrapped in walls of windows that flood the space with natural light and frame the lake like a living work of art. The gourmet kitchen is fully loaded with sleek appliances, a generous island, and room for the whole crew to gather, graze, and connect. The main level features two serene king suites, each designed to feel like your own private sanctuary after a day of adventure on the lake. Upstairs, a stylish loft and additional queen bedroom offer both quiet nooks and extra space for guests to spread out. Head to the lower level and let the fun continue--with a second full kitchen, cozy lounge



**Amanda Carraway**

Phone: (417) 430-6655

Murney Associates - Primrose

For full listing details, please scan:

