

686 Clearwater Drive 2E
Camdenton, MO 65020



Powered by lakefrontexpo.com

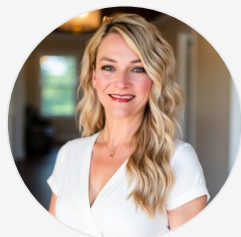
MLS# 3576865



\$275,000

2 Bedrooms | 2 Bathrooms | 991 Sqft

Welcome to your lakeside retreat! This stunning 2-bedroom, 2-bath condo offers more than just a home; it's a lifestyle. Located in the heart of a vibrant lakefront community, this residence boasts breathtaking views, located at 8 mile marker of the Big Niangua. This unit comes fully furnished and includes a 12x32 boat slip, all located a short walk from your doorstep. Enjoy resort-style amenities with two pools, one heated, a pavilion with a large covered setting area and a fire pit, playground, volleyball net, fenced in dog area, and much more. Located near lakefront restaurants, gas docks and convenient to restaurants and shopping by land. Don't miss out on this rare opportunity to experience lakeside living at its finest. Schedule your private tour today and discover why this condo is more than just a home it's a gateway to the lake life you've always dreamed of.



Laura Nicole Dorrell
Phone: (573) 375-8876

Lake Expo Real Estate
Office: (573) 693-1613

For full listing details, please scan:

