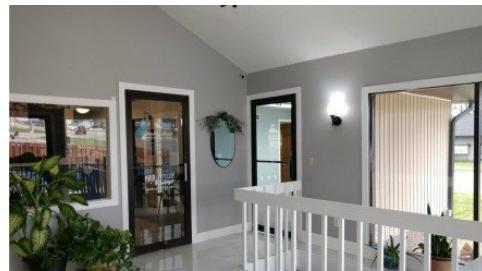
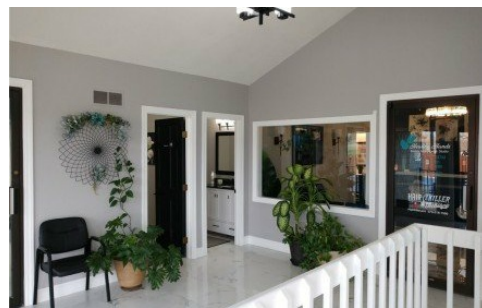


4732 Parkway 1 & 2
Osage Beach, MO 65065



Powered by **lakefrontexpo.com**

MLS# 3576947



\$1,200

472 Sqft

LAKE OF THE OZARKS - Central location with high traffic count and exposure in Osage Beach between Caseys, Big-O, Dominico's and Tirebiters. Access to reception area. ADA compliant. Superfast internet and signage space available.



JONATHAN R HARTENSTEIN

Lake Ozark Real Estate

For full listing details, please scan:

