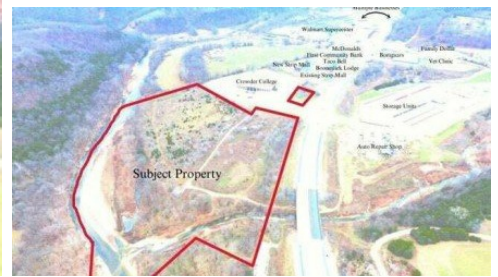


20+ Acres Commercial Drive Jane, MO 64856



Powered by lakefrontexpo.com

MLS# 60290707



\$1,600,000

Commercial Gem! Situated just north of the Arkansas line, in McDonald County, Missouri, this 20+ acre tract presents a blank canvas for a variety of commercial possibilities. Over the past two decades Jane, Missouri has evolved into a bustling business district, serving the needs of both Southwest Missouri and Northwest Arkansas, and this unique tract is certainly a rare gem in that mix. The property consists of a 1.2ac lot, which sits at the junctions of Business Highway 71, Larry Neff Drive and Commercial Drive and is the perfect location for a business front that would attract the attention of the 5, 000 to 10, 000 vehicles shown to pass by each day, according to the latest MoDOT traffic census; AND a much larger and open tract, which sits at the end of College Drive boasting over one-quarter mile of Little Sugar Creek frontage. This truly is a tract of ground that stands out, in a locale that has become a standout. With several new and existing businesses in the area and another handful currently in the building phase, the time is right for its full potential to be unlocked and brought to fruition.



Gary Wasson

Phone: (417) 437-3164

Coldwell Banker Harris McHaney & Faucette

For full listing details, please scan:

