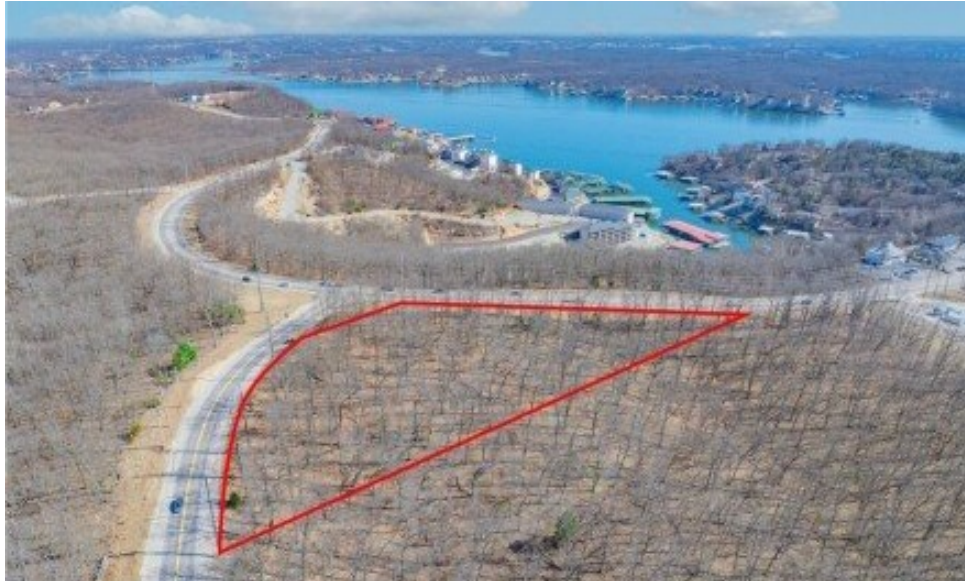


TBD HH and Carol Road
Lake Ozark, MO 65049



Powered by lakefrontexpo.com

MLS# 3574807



\$500,000

Prime Development Opportunity on Horseshoe Bend Parkway. This 5.3-acre parcel is strategically located in the heart of Horseshoe Bend Parkway, offering unmatched accessibility and visibility. Surrounded by popular restaurants, thriving businesses, shopping, and recreational activities, this property presents an ideal opportunity for residential, commercial, or mixed-use development. Its central location and proximity to key amenities make it an exceptional investment for forward-thinking developers.



**WEEG & ASSOCIATES LAKE OF THE OZARKS
REAL ESTATE**

Keller Williams L.O. Realty

For full listing details, please scan:

