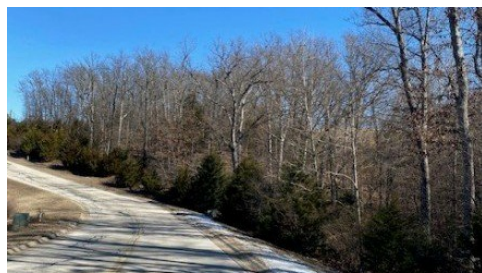
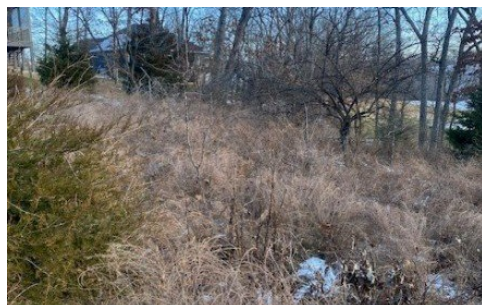


Lot 32 Country Club Cove Drive
Lake Ozark, MO 65049



Powered by **lakefrontexpo.com**

MLS# 3573230



\$43,000

Located in the beautiful Country Club Cove development area. This is one of 5 contiguous lots. This lot can be purchased individually or purchased in combination with the others. These lots back up to holes 8 & 9 at The Cove Golf Course. There is a tree-lined easement between the lots and the golf course for privacy. Conveniently located only a short distance from Horseshoe Bend Parkway and numerous conveniences.



**WEEG & ASSOCIATES LAKE OF THE OZARKS
REAL ESTATE**

Keller Williams L.O. Realty

For full listing details, please scan:

