

006 County Rd 14
Aldrich, MO 65601



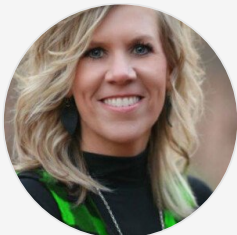
Powered by lakefrontexpo.com

MLS# 60284256



\$649,999

118 m/l Acres, Lake View, Open Pasture, Corral, Pond and a Spring ready for your Cattle Operation! Great Location just off of 215 Highway east of Bona and a short distance from 245 Highway makes for great access to this one-of-a-kind property! The land is rolling allowing you to pick the perfect place for your building site! The farming aspect of the property offers mostly open pastures, some scattered trees for cattle cover, spring which the deer will love, corral and perimeter fencing. Bonus, Corp land located just across the road with quick access to the lake! Dadeville School District!!!



Kelly Roy

Phone: (417) 298-0071

Missouri Home, Farm & Land Realty, LLC

For full listing details, please scan:

