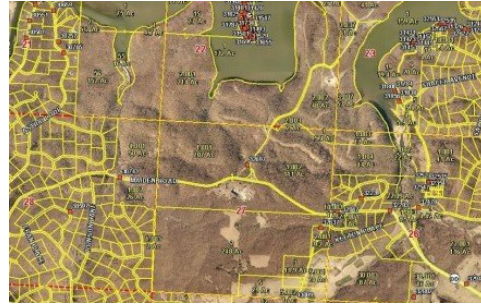


1989 Schultz Circle
Edwards, MO 65326



Powered by lakefrontexpo.com

MLS# 3572576



\$5,500

Nice Building Lots with 4.18 Acres at Forbes Lake of the Ozarks Park. This is a private gated residential & recreational community between Truman Dam to the west & Bagnell Dam to the east. The Park has over 12, 800 acres & spans 5 miles of shoreline property along the Lake; four private Lakes dedicated to the landowners. The scenic beauty of the Park is enhanced by its natural wooded setting throughout that includes oak, walnut, hickory, elm, sycamore that brings with it the beauty of Missouri Wildlife. The Park has 148 miles of graveled & grass roads that will meet the needs of walkers, hikers, & horseback riders. As a Wildlife sanctuary, you undoubtedly come across a variety of animals, both large & small, during your walk. The Park is located on the Principle Mississippi Migration Flyway. This Flyway brings a wide variety of birds to the area. Forbes Park has 3 boat ramps with access to the Lake of the Ozarks. These ramp areas, & amenities are for use by the land owners. Also, available is a nice RV Park, Tennis Courts, Picnic Areas, Playground, 4 Fishing Lakes, Pavilion for group meetings. Enjoy the beauty of the Ozarks. Visit FORBESLOA.COM for more information.



Linda Eldridge

Coldwell Banker Lake Country

For full listing details, please scan:

