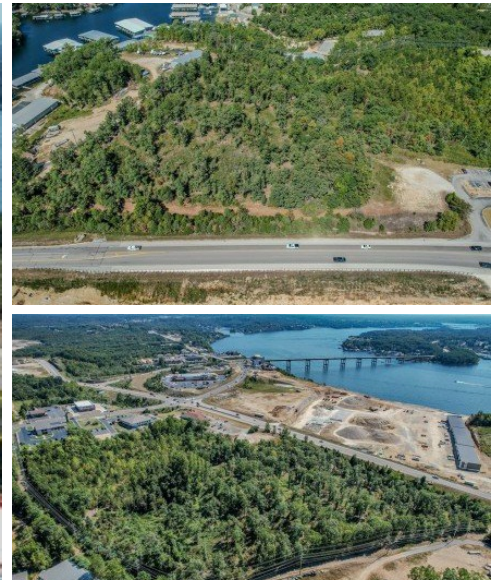
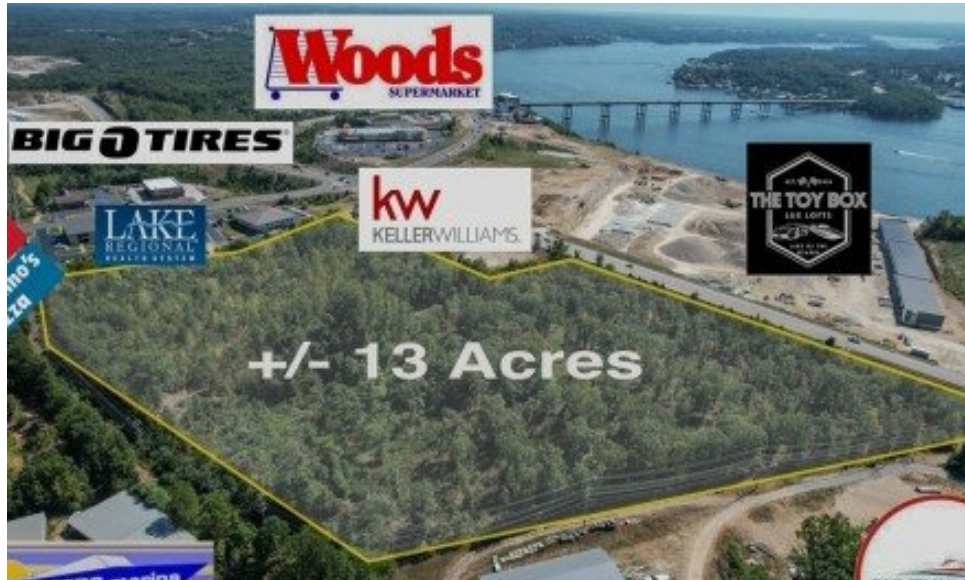


# TBD Horseshoe Bend Parkway Lake Ozark, MO 65049



Powered by lakefrontexpo.com

MLS# 3570462



## \$1,250,000

**PRIME LOCATION!** This 13+/- acre parcel in Lake Ozark is a fantastic opportunity! With C2 zoning and prime frontage on Horse Shoe Bend Parkway, it offers excellent visibility and accessibility. The possibilities are truly endless ideal for commercial development, mixed-use projects, or recreational facilities. Don't miss the chance to make your mark in this vibrant, fast growing area! The 13+/- acres will be surveyed to separate from the full parcel. Road Frontage will be verified when survey is completed. Tax amount includes extra acreage - will be refigured when surveyed.



**JIM RICHARD TROWBRIDGE**

Keller Williams L.O. Realty

For full listing details, please scan:

