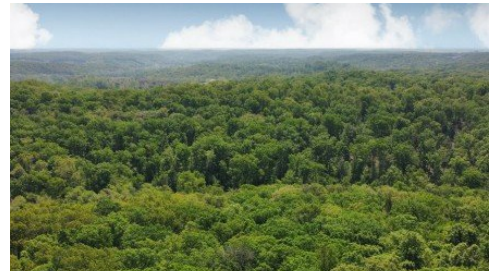


**Gilliam Road**  
Eldon, MO 65026



Powered by lakefrontexpo.com

**MLS# 3544391**



**\$1,166,000**

Here us a unique opportunity. Located just 3.7 mi (about 5 minutes) from Bagnell Dam Strip. This 212.17- acre property has already been platted into 35 lots with roads throughout. Also 2 dilled wells. The Declaration of Covenants, Conditions and Restrictions are on file with Miller Co. Recorder. Acreage known as Whispering Oaks, lots could be sold immediately. No lots were ever sold, the Whispering Oaks declaration can be rescinded and property can be used for any purpose. Plenty of tall timber means lots of shade for an RV park or off-road ATV park would have people coming from all over the Midwest. Also, if an individual wanted a hunting retreat close to their lake home this would be ideal with plenty of room for family and friends to bag a turkey or deer. This rare opportunity to won a large parcel of land so close to the Osage Beach area. Come take a look, you will not be disappointed!



**Hansel Morris**

Reece and Nichols Golden Key Realty

For full listing details, please scan:

